



Welbeck Road Area Parking Review

PUBLIC CONSULTATION

IMPORTANT – THIS AFFECTS YOU – PLEASE RESPOND

What this is about?

This is an informal public consultation aimed at gathering information from residents and businesses about parking problems on their roads to establish if parking restrictions will help to address these issues.

Although we have heard from some local representatives and stakeholders we now need to know your views. Your response is vital so that officers are able to clearly identify where problems exist and what parking controls you would support. This will determine the areas that will be subject to further investigations with a view to the implementation of parking control measures such as a controlled parking zone (CPZ) and /or yellow line waiting restrictions. No decisions have yet been made.

Any parking controls agreed with the councillors will be progressed to the final stage of the consultation process which is the statutory consultation process. Parking controls will only be implemented where there is majority support, except for some yellow lines which are proposed for safety or access reasons.

This public consultation will run for a total period of 21 days between 17 March and 7 April 2014.

Please note that once this parking review is completed it is unlikely another review will occur in this area for several years due to outstanding requests from other areas of the borough. It is therefore important that you tell us any parking issues so that we can address them within this review.

Parking Review Consultation

The area for this consultation is centred on the southern end of Welbeck Road including the entrances to Grange Primary School and The Arches, a private road where quite a number of small businesses are located. Currently there are no parking restrictions on these roads except at the school entrances. However, there are yellow line waiting restrictions proposed in the section of Welbeck Road between the school entrance and the junction with Coles Crescent as part of the 20mph zone scheme which received strong support in the recent consultation.

Support for any parking scheme / CPZ is usually strongest where residents are currently experiencing parking problems. The consultation area is deliberately more extensive than the area currently experiencing the worst problems to allow you to assess if parking might become worse in your area as a result of parking displacement, for example if a road close to yours is included in a CPZ. You may therefore wish to consider being included with a CPZ as a result.

A CPZ could include yellow lines and permit bays (where parking requires a permit paid for by an annual fee) and perhaps Pay & Display by any shops. A CPZ controls non-resident parking by regulating the kerbside space so residents and their visitors have a better chance of finding parking on their road. Permit parking bays will only be provided where there is sufficient space and it is safe to do so. Any single yellow lines that may be installed as part of a CPZ do not allow anyone, including those with CPZ parking permits,

to park on these lines during the times of control of the CPZ. Any (separately signed) single and/or double yellow lines may operate at differing times to any CPZ controls.

We will automatically aim to include double yellow lines at junctions and bends or other locations where parking causes safety or access problems, particularly for emergency service vehicles. These reinforce the well established rules of the Highway Code and will be installed even if other CPZ controls do not proceed.

The Council is only able to introduce parking controls on the public highway. There are several roads shown by purple hatching on the plan which are not adopted public highway so we are unable to introduce measures on these streets. People whose addresses are on those streets are being consulted to help us design a scheme which reflects the needs of the whole community.

For more information on parking controls, the benefits and limitations, along with a number of frequently asked questions you can refer to the enclosed booklet 'Parking – Can We Help You'.

The analysis and indeed the scheme measures taken forward to statutory consultation can only be based on the responses we receive. That is why it is important that as many people as possible respond. Details of how to respond are given on page 7.

Parking permit charges

In CPZs you need to display a valid permit in the vehicle if it is parked in a permit bay, when it is in operation, otherwise you are likely to receive a parking fine. Permits can only be purchased by residents within the CPZ area. The parking permit charges are the same across the borough irrespective of the hours of control on your street, refer to the enclosed booklet '**Parking – Can We Help You**'.

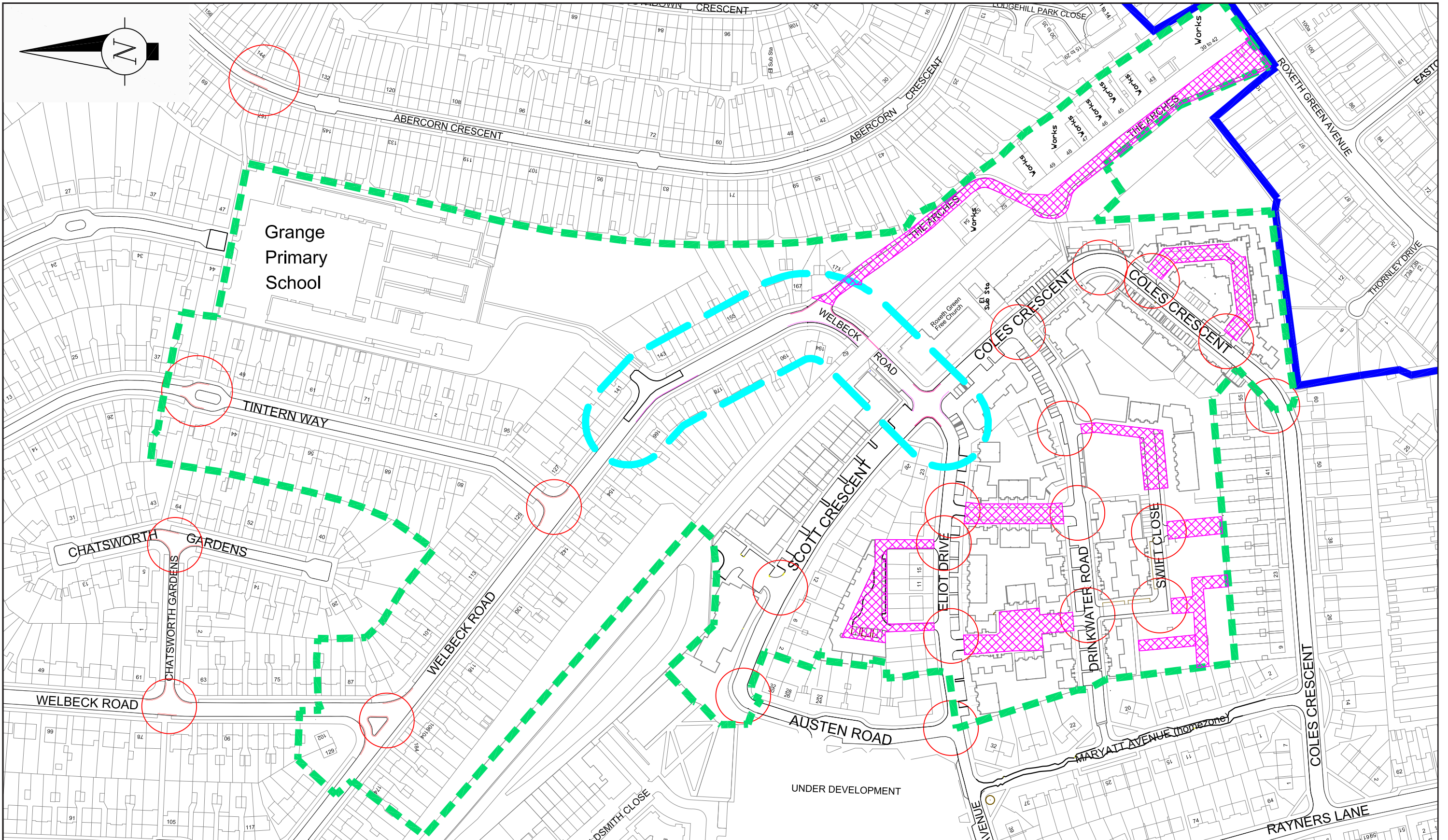
Central government requires controlled parking schemes to be self-financing, so money raised from parking pays for the installation of a CPZ, parking attendants, the costs of processing parking fines, maintenance and other associated costs. The current annual resident parking permit costs in Harrow from 1st April 2014 are:

1st Vehicle in household	£64.90	2nd Vehicle	£97.30
3rd Vehicle	£129.80	4th and subsequent Vehicle	£162.20

Visitor permits are £16.20 per book of 10, which is reduced to £8.10 for senior citizens or those receiving mobility benefits if the discount is claimed. Blue badge displaying vehicles are free.

For full details of business permits and qualifying vehicles for discounts see '**Parking – Can We Help You**' booklet.

APPENDIX B



- NOTES:**
- Consultation area for the possible introduction of a controlled parking zone.
 - Existing South Harrow CPZ
 - Previous consultation on some waiting restrictions as part of school 20mph zone
 - Unadopted or private road where we cannot introduce parking controls
 - Locations where double yellow lines will be proposed at statutory consultation



Harrow COUNCIL
LONDON

COMMUNITY & ENVIRONMENT
TRANSPORTATION

P.O. Box 39, Civic Centre,
Harrow, Middlesex. HA1 2XA
Tel: 020 8863 5611
Fax: 020 8420 9611

Designation	Details of Revision	Date	Sign	Project
A	For consultation	14/02/14	SMF	WELBECK ROAD AREA PARKING REVIEW

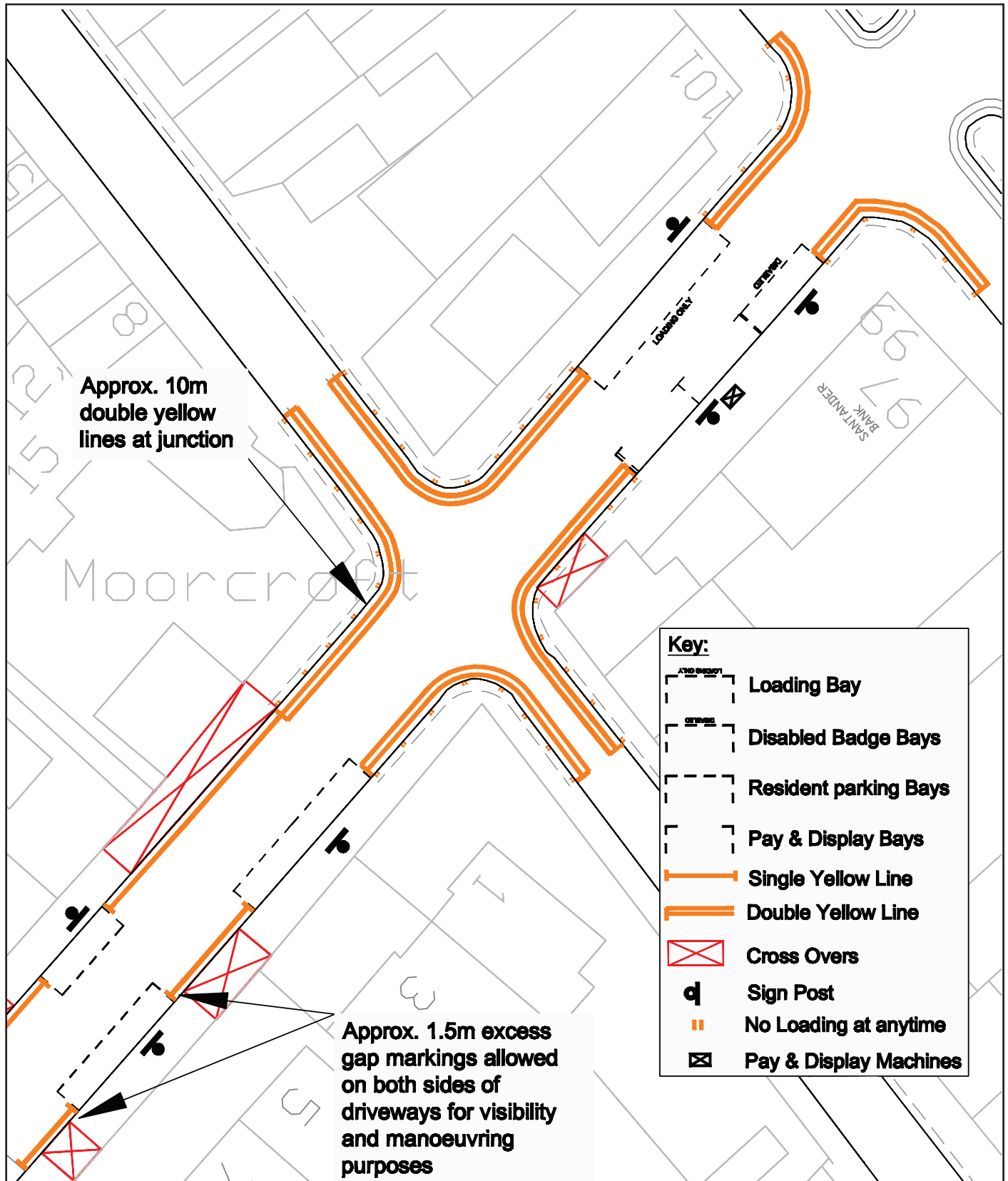
This map is reproduced from or based upon Ordnance Survey material with the permission of Ordnance Survey on behalf of the Controller of Her Majesty's Stationery Office (c) Crown copyright. Unauthorised reproduction infringes Crown Copyright and may lead to prosecution or civil proceedings. London Borough of Harrow 100019206.

WELBECK ROAD AREA PARKING REVIEW

Title: **Consultation for possible new Controlled Parking Zone and Associated Restrictions**

Scale	Drawn	Checked
NTS @ A3	SMF	AL
	Date	
	10/12/13	
Drawing no	T/DWG/000652	
Autocad file	O:\TRAFFIC\Projects\TPR0122 Welbeck Road Possible CPZ\Drawings\WelbeckCPZ consultation plan3.dwg	

Example of CPZ bays and yellow line markings



What happens next?

We are aware that not everyone is of the same view and therefore have enclosed a questionnaire for you to complete in private. The information you provide will be analysed along with all other comments received. We ask you questions about any parking problems, whether you support a CPZ and if so what operational hours you would prefer.

If you have access to the internet we would prefer you to respond on-line as it is more environmentally friendly and helps the council to save costs. You can submit your questionnaire on-line by visiting: www.harrow.gov.uk/trafficconsultations

You then click on the link for the 'Welbeck Road Area Parking Review' and click on 'start survey' to make your comments. You will be asked to register your details before completing the survey. Alternatively, you can send the questionnaire using the enclosed prepaid envelope.

All responses should be received no later than 7 April 2014.

The results of the consultation will be discussed with local councillors and will be reported to the council's Traffic and Road Safety Advisory Panel (TARSAP), in July 2014. The Panel will discuss and agree on a scheme to recommend to the Portfolio Holder for Community Safety and Environment for a formal decision. The analysis and indeed the scheme measures taken forward to statutory consultation (the required legal process to introduce any parking restrictions) can only be based on the responses we receive. That is why it is important that as many people as possible respond.

We will contact all residents and businesses consulted to notify them of the results once a decision has been made.

More information

If you would like to discuss any aspect of this consultation in more detail please contact the project engineer, Stephen Freeman, whose contact details are as below:

Stephen Freeman
Traffic & Parking
Harrow Council,
P.O. Box 39,
Civic Centre
Harrow
HA1 2XA
Email: transportation@harrow.gov.uk
Tel: 020 8424 1437

APPENDIX B

Please call the number below for a large print version of this document, or a summary of this document in your language.

- Albanian** Nëqoftëse gjuha Angleze nuk është gjuha juaj e parë, dhe keni nevojë për përkthimin e informatave të përmbajtura në këtë dokumentë, ju lutemi kontaktoni numërin dhënë.
- Arabic** إذا كانت الانجليزية ليست لغتك الأولى وتحتاج لترجمة معلومات هذه الوثيقة، الرجاء الاتصال على رقم
- Bengali** যদি ইংরেজি আপনার মাতৃভাষা না হয় এবং আপনি যদি এই প্রচারপত্রের তথ্যগুলোর অনুবাদ পেতে চান তাহলে যে টেলিফোন নম্বর দেওয়া আছে সেখানে দয়া করে যোগাযোগ করুন।
- Chinese** 如果你主要說用的語言不是英語而需要將這份文件的內容翻譯成中文，請打註明的電話號碼提出這個要求。
- Farsi** اگر انگلیسی زبان اول شما نیست و شما نیاز به ترجمه اطلاعات موجود در این مدرک را دارید، لطفاً با شماره داده شده تماس بگیرید
- Gujarati** જો ઈંગ્લિશ તમારી પ્રથમ ભાષા ન હોય અને આ દસ્તાવેજમાં રહેલ માહિતીનો તરજૂમો (ટ્રાન્સલેશન) તમને જોઈતો હોય તો કૃપા કરી જણાવેલ નંબર ઉપર ફોન કરો
- Hindi** यदि आपको अंग्रेज़ी समझ नहीं आती और आपको इस दस्तावेज़ में दी गई जानकारी का अनुवाद हिन्दी में चाहिए तो कृपया दिए गए नंबर पर फोन करें।
- Punjabi** ਜੇ ਤੁਹਾਨੂੰ ਅੰਗਰੇਜ਼ੀ ਸਮਝ ਨਹੀਂ ਆਉਂਦੀ ਤੇ ਤੁਹਾਨੂੰ ਇਸ ਦਸਤਾਵੇਜ਼ ਵਿਚ ਦਿੱਤੀ ਗਈ ਜਾਣਕਾਰੀ ਦਾ ਤਰਜਮਾ ਪੰਜਾਬੀ ਵਿਚ ਚਾਹੀਦਾ ਹੈ ਤਾਂ ਕਿਰਪਾ ਕਰਕੇ ਦਿੱਤੇ ਗਏ ਨੰਬਰ ਤੇ ਫੋਨ ਕਰੋ।
- Somali** Haddii Ingiriisku uusan ahayn afkaaga koowaad aadna u baahan tahay turjumidda xog ku jirta dokumentigan fadlan la xiriir lambarka lagu siiyey.
- Tamil** ஆங்கிலம் உங்கள் தாய்மொழியாக இல்லாதிருந்து இப்பத்திரத்திலிருக்கும் தகவலின் மொழிபெயர்ப்பு உங்களுக்கு தேவைப்பட்டால் தயவுசெய்து தரப்பட்ட தொலைபேசி எண்ணில் தொடர்பு கொள்ளவும்.
- Urdu** اگر انگریزی آپ کی مادری زبان نہیں ہے اور آپ کو اس دستاویز میں دی گئی معلومات کا اردو ترجمہ درکار ہے، تو براہ کرم دئے گئے نمبر پر رابطہ کریں۔

020 8424 1437

APPENDIX B

WELBECK ROAD AREA PARKING REVIEW QUESTIONNAIRE

In an effort for the Council to be more environmentally friendly and reduce costs, you can submit your questionnaire on-line by visiting www.harrow.gov.uk/trafficconsultations. This will direct you to a page, select the 'Welbeck Road Area Parking Review' survey and then click on 'start survey'. Alternatively, you can send the questionnaire using the enclosed prepaid envelope but this costs the Council 50p per response.

Responses should be received no later than 7 April 2014.

Due to the large number of responses anticipated, we cannot reply to you individually.

It is recommended that you read the leaflet and enclosed documents (or the website) before completing the questionnaire. In order for us to analyse your response we need your address. Questionnaires returned without a name and address **will not** be officially recorded in the results of this consultation. We count your household/business as one response, rather than number of responses from individual residents/employees from the same address.

First Name Family Name

Business Name (if applicable)

Property Number/Name Street Name

Postcode Date

Please tick the most appropriate answer to each of the questions below, and use the space for comments on the back of this sheet if you need to.

If you are not sure about any of the questions, please contact the project engineer whose details are given in the accompanying leaflet and at the above website address.

Q1 Are you a:

Resident

Business

Both

Q2 Do you or your visitors experience parking problems on your street?

Yes

No

Don't know / No opinion

Q3 If you answered Yes to Q2, which approach should the council take?

a) Do Nothing

b) Controlled parking zone & permit bays

c) Other suggestion eg pay & display, single yellow lines, please specify

.....

(continue on reverse)

APPENDIX B

Q4 If you are a resident and did not support a CPZ in Q3. Would you change your mind if adjoining roads request to be included in the CPZ. This could take account of any vehicles displaced from other roads.

Yes

No

No opinion

Q5 If you supported a CPZ in Q3 which days would you like the CPZ to be in operation and enforceable? (please tick one box only)

a) Monday to Friday

b) Monday to Saturday

c) Monday to Sunday

d) Don't know/ No opinion

Q6 Which times would you like them to be in operation? (please tick one box only)

a. In the morning (1 hour)

b. In the afternoon (1 hour)

c. Morning & afternoon (1 hour each)

d. All day (eg 8am to 6.30pm)

e. Don't know/ No opinion

Q7 If you **DO NOT** want your response to be available for public inspection please tick here.

COMMENTS – Please let us know if you have or know of other parking problems in the Welbeck Road/Coles Crescent/Scott Crescent area. Use additional sheets if needed